



Bobcat®

Compact Tractors

CT4045 | CT4055



One Tough Animal.





LIKE YOU, BOBCAT WAS BORN FOR THIS.

YOU MIGHT KNOW Bobcat Company from its iconic compact loaders and excavators: those tough, white-and-orange machines you see on countless construction sites and landscaping projects. But our first machine was literally born in a barn.

Designed for a turkey farmer, the original compact loader was destined to clean small livestock pens and stalls. Ever since, Bobcat® equipment has been a mainstay on ranches, dairies and all kinds of fruit, grain and vegetable operations.

The rural lifestyle is a piece of your identity. It's home. It's you. Bobcat shares your roots, and we're coming back to them in a big way – with a tough new lineup of 5 compact tractors. They have everything you need to turn the dreams for your land into reality.

*We love a good homecoming. So try a Bobcat compact tractor on your property. It's all Bobcat. **And it's all you.***

PERFORMANCE

The more you do with your tractor, the more ideas you have for your property. Bobcat compact tractors prepare you for every possibility.



MORE.

THESE AGILE MACHINES ARE STRONG

enough to work inside and around sheds, barns, animal enclosures and anywhere else the work takes you. With models up to 55 hp with hydrostatic transmission, plus generous lifting ability, ground clearance and a powerful 3-point hitch with power take-off (PTO), Bobcat brings outstanding performance and value to your property.

From its wheelbase to its length, tire options and overall engineering, your Bobcat compact tractor is powerful and capable while being responsive and comfortable to operate. With top travel speeds as high as 29.7 km/h, you'll spend less time moving from one point to another, and you'll make every second count when you have work to get done. And because a hard-working tractor needs hard-working traction, you can easily engage four-wheel drive whenever the work demands it.



Stable Wheelbase

The 1810mm wheelbase of the 4000 Platform tractors maximizes your towing capacity and optimally distributes weight to each wheel for more stability on hilly terrain.

More Ground Clearance

Class-leading ground clearance improves maneuverability in rough or muddy terrain.

Hydrostatic Transmission (3-Range HST)

The hydrostatic transmission uses hydraulic pressure to change speed, operating similar to a vehicle. You'll only need to stop moving if you want to change your range. This is a good transmission choice if you're doing frequent front-end loader work, mowing or clearing brush as you maneuver through wooded areas. Its ease of operation also makes it a good choice for novice drivers. Forward and reverse are controlled by foot pedals.

Tight Turning Radius

Maximum maneuverability is the key to effective mowing, tilling and more. Bobcat compact tractors feature a tight turning radius – as little as 2610mm – so you can move in close to trees, buildings and other obstacles.

Steering Brakes

Steering brakes are especially useful when you're working between buildings, in pens or barns, or around trees. They assist in maintaining a tight turning radius, nearly pivoting the tractor on the inside wheel.

Leading Drawbar Towing

Bobcat compact tractors deliver leading drawbar towing power and force for heavy towing performance that beats many other tractor brands.

Tire Options

Two types of tires are available for 4000 platform Bobcat compact tractors. They offer a combination of reliability and ride quality to match the requirements of your work.

Industrial Tires (Standard)

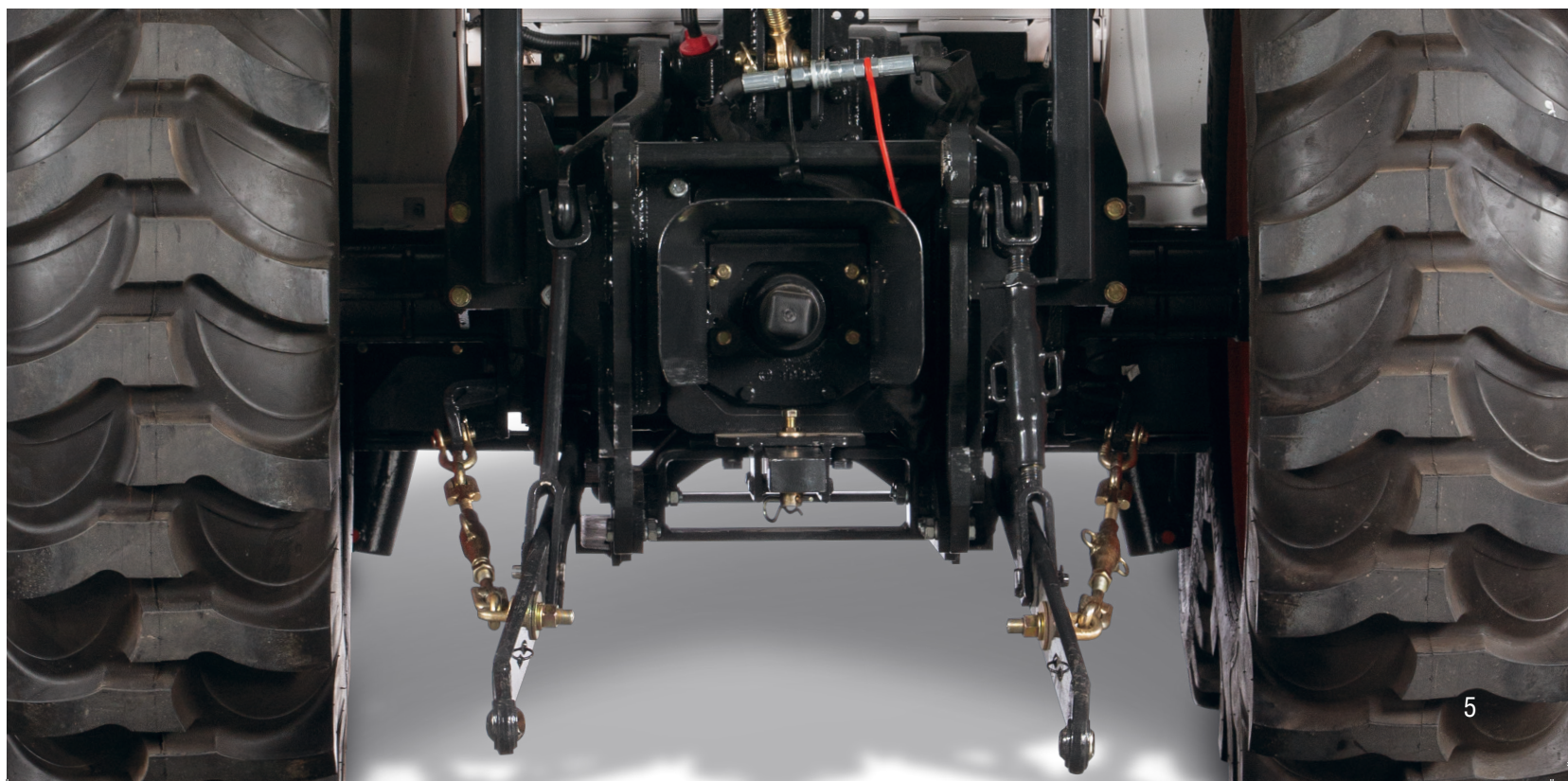
Industrial tire tread is wider than agricultural tires, and the lugs are deeper than turf tires. They deliver great traction for all ground conditions and many different applications.

Agricultural Tires

These tough tires have deep lugs for optimal traction and self-cleaning in soft soil and mud. They also deliver more power to the ground when towing heavy loads or pulling implements.

Adjustable Hitch

The hitch is adjustable to provide towing flexibility and convenience.



UPTIME

PROTECT YOUR INVESTMENT.

From rugged metal hoods to the solid and sturdy construction of our 3-point hitches to our unmatched dealer support, your Bobcat tractor can stand up to a challenge.

Metal Hood

The metal hood, designed to provide great visibility from the operator station, stands up to tough jobs, reliably protecting the engine and components from dirt and debris.

Polymer Fuel Tank

A heavy-duty polymer fuel tank maintains fuel integrity and eliminates rust-related contamination.

Front Guard

Included with the optional front-end loader and also available separately, the heavy-duty brush guard protects your tractor's front end from debris, branches and other obstacles.

24-Month, 1,500-Hour Warranty

Bobcat Company stands behind your tractor. Our standard warranty provides 24 months of coverage from defects in material and workmanship or 1,500 hours of usage (whichever occurs first).

Your chores demand daily attention. Your tractor needs to be ready to work when you are. Bobcat compact tractors are built to contend with the dust, dirt and grit of your toughest challenges, and they're designed with ease of maintenance in mind.

THE BOBCAT DEALER NETWORK ADVANTAGE

Bobcat built its brand on quality equipment serviced by reliable local dealers, with warranty repairs and parts availability that are second to none. With the help of our knowledgeable dealers, Bobcat customers have kept machines running for decades doing the toughest jobs imaginable. If you're looking for long-term service and support, take a look at Bobcat compact tractors.



Minimize your maintenance.

You bring a tractor home to do work. It shouldn't be a job to keep it running. Maintenance points on your tractor are easy to find and reach – so upkeep is simple and takes less time. Flip up the metal hood – it opens nearly 90 degrees – to easily access the battery, filters and other checkpoints. Other components are simple to reach and service, allowing you to easily retain peak performance for years.

One-Side Maintenance

All daily checks, engine fluid fills and filters are located on one side of the engine, which makes it easy to keep your tractor running smoothly with minimal effort.

One-Piece Engine Hood with Air Cylinder Assist

There are no side panels to remove when you need to access your engine. It's as simple as lifting the hood. With the air cylinder assist, it takes little effort. When fully opened, the tractor's hood stands nearly perpendicular to the engine compartment. This provides best-in-class maintenance accessibility and makes virtually all of the major service points easy to reach.

All-in-One Fuse and Relay Box

Simplify replacing fuses or troubleshooting electronics with a centralized location for fuses and relays.





COMFORT



ENJOY **YOUR WORK.**

When you have hours of mowing and acres of upkeep ahead of you, a comfortable tractor is a must. Bobcat compact tractors offer outstanding features that make tough jobs comfortable and enjoyable. Intuitive controls that fit you naturally. A comfortable ride. Quiet engines that help you focus on the job. When the projects pile up, you won't mind spending extra time on this tractor.



Comfortable Operator Station with Ergonomic Controls

The operator station on Bobcat compact tractors is designed to enable hours of comfortable, confident work. All of your controls, gauges and buttons on Bobcat compact tractors are thoughtfully laid out with your ease of use in mind. The illuminated dashboard allows you to operate and easily monitor performance in all light conditions.

Rubber Deck Mat

The rubber mat dampens vibrations through the floor to give you a more comfortable day's work.

Linked Pedal Lever

The linked pedal increases engine rpm as you engage the travel pedal, enabling operation that feels similar to driving a car. This makes for intuitive front-end loader control – and enhances ease of use on a variety of other jobs.

HST Cruise Control

When grading, raking or traveling longer distances without direction changes, speed cruise control holds the travel pedal in place to obtain a more consistent speed with less input.



FOLDABLE ROLLOVER PROTECTIVE STRUCTURE (ROPS)

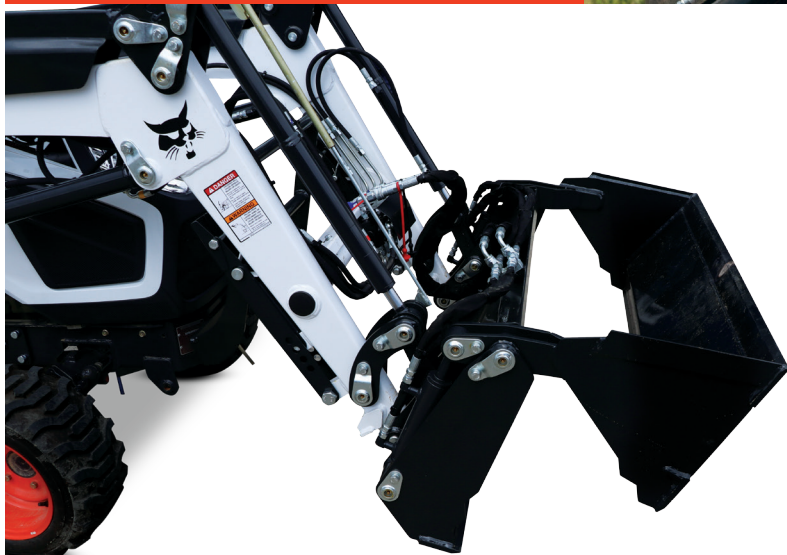
The ROPS is designed to protect the operator in the event of a rollover (when the ROPS is locked in the up position and the seatbelt is fastened). The foldable ROPS can be temporarily lowered when driving under trees, into garages or in other low-clearance areas.

VERSATILITY

DO MORE

Throughout the day, you can go from mowing to grading to digging. Your property presents endless opportunities to get outside and get something done. From front to back, Bobcat tractors are well equipped to keep up with your to-do list.

with one machine.



Front-End Loader with Euro Hitch Quick Attach - Front-End Loader included Self-leveling and 4 in 1 Bucket

The front-end loader is a must-have for digging, dirt moving, loading and carrying material. On your Bobcat tractor, the front-end loader is easy to attach and remove, plus it delivers leading lift capacity and height for exceptional productivity.

Its quick attach mounting system enables you to use a variety of attachments. With a quick change, you can gear up for more tasks and bring more value and versatility to your property. Front-end loaders are equipped with float functionality to follow ground contours as you work.



Take on digging, loading and material handling with a strong, easy-to-use front-end loader. Finally, use an array of implements with your 3-point hitch and rear PTO. Your dealer can help you acquire a range of Bobcat implements for the work you do on your land.



Rear Remote Hydraulics

A rear remote hydraulic valve allows you to gain even more attachment versatility by enabling hydraulic functions used to control or position many implements.

Bent Lower Lift Arms

The lower lift arms provide a forgiving angled design that makes implement hookup quick and easy.

Rear PTO and 3-Point Hitch

The 3-point hitch is a key to your tractor's versatility. It enables you to do a large number of tasks on your property with both drag-behind and PTO-powered implements.

Flip-Up PTO Guard

The flip-up PTO guard ensures easy attachment installation while providing operator protection during use.



ATTACHMENTS AND OPTIONS

YOUR COMPACT TRACTOR

packs a lot of versatility for the price, and hard-working Bobcat attachments are made to handle the numerous possibilities you uncover on your land.



Front-End Loader with 4 in 1 Bucket

The front-end loader is a must-have for digging, dirt moving, loading and carrying material. The Bobcat front-end loader is easy to attach and remove, plus it delivers leading lift capacity and height for exceptional productivity.

Front-End Loader	FL9-OC
Max. Lift Height to Pivot Pin	2641mm
Max. Lift Height under Level Bucket	2407mm
Clearance with Bucket Dumped	1942mm
Reach at Maximum Lift Height	271mm
Maximum Dump Angle	52°
Reach with Bucket on Ground	1728mm
Maximum Rollback Angle	37°
Digging Depth	213mm
Lift Capacity at Pivot Pin (max. height)	884kg
Rollback Force at 500 mm (at Ground level)	1108kg
Weight (with Bucket)	641kg
Bucket Capacity (Heaped Capacity)	0.33m³
Bucket Widths	1670mm



Backhoe

Turn your Bobcat compact tractor into a powerful part-time excavator with this handy attachment. The backhoe is great for general purpose digging and trenching. Sub frame included.

Backhoe	BH86-0C
Digging Depth (2' flat bottom)	2397 mm
Reach from Center Line of Swing Pivot	3184 mm
Loading Height (bucket at 60°)	1939 mm
Maximum Leveling Angle	10°
Swing Arc	180°
Transport Height (maximum)	2362 mm
Bucket Rotation	170°
Stabilizer Spread (down position)	1862 mm
Stabilizer Spread (up position)	1752 mm
Bucket Digging Force	1602 kgf
Operating Pressure	170 bar
Shipping Weight (with bucket)	730 kg



DEALER INSTALLED KITS AND OPTIONS

You can customize and accessorize your Bobcat compact tractor to improve productivity, enhance durability, maximize operator comfort and more. Simply choose options and accessories* that match your unique demands.

MODEL	OPTION LIST
CT4045 CT4055	Remote Hydraulic Valve
	Remote Hydraulic Valve (Detent Type)
	Rear Working Light
	Front Weight
	Sun Canopy
	7 Pin Socket Kit
	Rear Weight
	Front Working Light
	Power Socket

* Options and accessories are subject to change.

SPECIFICATIONS



Model	CT4045	CT4055
Engine		
Gross Horsepower	45 HP	55 HP
No. of Cylinders	4	4
Total Displacement	2435 L	2435 L
Fuel Tank Capacity	48 L	48 L
3-Point, PTO & Hydraulics		
Average PTO Horsepower	38.2 HP	44 HP
3-Point Hitch	Category 1	Category 1
Lift Control Type	Hydraulic Position Control System	Hydraulic Position Control System
Hydraulic Lift Capacity	1232 kg	1232 kg
Rear PTO	540 rpm	540 rpm
Rear PTO System	Independent	Independent
Mid-PTO	N/A	N/A
Total Hydraulic Pump Capacity	62.4 L/min.	62.4 L/min.
Rear Hydraulics	Standard (1set)	Standard (1set)
Lower Links	Ball	Ball
Lifting Rod	Turnbuckle	Turnbuckle
Drive System		
Transmission	HST	HST
Speed Ranges	Infinite, 3 Ranges	Infinite, 3 Ranges
Brakes	Wet Disc Type	Wet Disc Type
Rear Differential Lock	Rear Standard	Rear Standard
Four-Wheel Drive	Standard	Standard
Travel Speeds (w/ Ind. Tires)		
Forward	0 - 29.7 km/h	0 - 29.7 km/h
Reverse	0 - 20.8 km/h	0 - 20.8 km/h
Dimensions		
Overall Length (w/ 3 pt.)	3189 mm	3189 mm
Overall Width (w/ industrial tires)	1730 mm	1730 mm
Overall Height (w/ ROPS)	2270 mm	2270 mm
Wheelbase	1810 mm	1810 mm
Ground Clearance	368 mm	368 mm
Weight	1596 kg	1596 kg
Steering		
Inside Turning Radius	2610 mm	2610 mm
Tilt Steering Wheel	Standard	Standard
Safety Equipment		
Fold Down ROPS (roll-over protective structure)	Std	Std
Fully Retractable Seatbelt	Std	Std
Features		
Fully Adjustable Premium Seat	Std	Std
Linked Pedal	Std	Std
Rubber Floor Mat	Std	Std
Manual/ Auto PTO Switch	Std	Std
Cup Holder	Std	Std
Glow Plug Engine Pre-heat	Std	Std
Toolbox	Std	Std
Head Lights/Tail Lights/ Brake Lights	Std	Std
Cruise Control	Std	Std
Horn/Hazard Flasher/Turn Signals	Std	Std
Side Mirror	Std (LH1)	Std (LH1)

*Note: Hydraulic 3 pt. lift capacity will vary depending on lift point height.



PIONEERING MANEUVERABILITY

Bobcat introduced its first compact loader in 1958, and two years later, the world's first skid-steer loader. This created an entire industry of machines that put the power of large equipment in a compact size with unmatched maneuverability.

OFFERING MORE VERSATILITY

In 1970, Bobcat invented the first quick-change attachment system for skid-steer loaders, known as the Bob-Tach® mounting system. Today we offer more compact equipment attachments than anyone in the world, empowering customers to transform all of our machines into multi-tasking attachment carriers and reach higher levels of production.

ONE TOUGH ANIMAL®

All over the world, Bobcat equipment is known for being durable and dependable. By lasting longer and minimizing downtime, we help our customers become as successful as possible.

HELP WHEN YOU NEED IT

With over 50 years of experience and more than 150 locations, we offer the best dealer network in the ALAO region for compact equipment. Our dealers offer a quality sales force, dependable parts departments and qualified service technicians, all leading to a quality customer experience.



A CONSTANT INNOVATOR

In the late 1950s, a turkey farmer needed help – so in 1958, we introduced what was to become the world's first skid-steer loader. We created an industry by listening to the needs of the customer. This focus is the same today. In 2000, a superintendent needed help – so we built the world's first Toolcat utility work machine. We continue to be a global leader in innovation by listening to our customers.

LEADER BY DESIGN

Listening to the customer and a pioneering spirit are why Bobcat continues to lead the evolution of compact equipment ...

- 1960** Invented the FIRST true skid-steer loader.
- 1970** Invented the FIRST attachment mounting system for skid-steer loaders.
- 1977** Built the FIRST skid-steer loader with no chain adjustments required. Still a Bobcat exclusive.
- 1981** Introduced the FIRST secondary restraint seat bar.
- 1983** Developed the FIRST skid-steer loader with a transversely mounted engine. Still a Bobcat exclusive.
- 1990** Introduced the FIRST compact excavator manufactured in the U.S.
- 1999** Introduced the FIRST compact track loader with a solid-mounted undercarriage manufactured in the U.S.
- 2001** Invented the FIRST loader with all-wheel steer and skid-steer capabilities. Still a Bobcat exclusive.
- 2003** Revolutionized the way the world works with the invention of the Toolcat™ utility work machine line, the world's FIRST utility work machines – a cross between a pickup, attachment carrier and utility vehicle. Still a Bobcat exclusive.
- 2006** Introduced the FIRST utility vehicle with RapidLink™ attachment mounting system.
- 2008** Introduced Roller Suspension™, the FIRST all-steel suspension system.
- 2009** Launched M-Series compact excavators and loaders.
- 2011** The M-Series loader models S850 and T870 became the largest and most powerful in the Bobcat product lineup.
- 2012** Bobcat introduced two new sizes of extendable-arm excavator options that are both attachment and clamp-ready.
- 2013** The M-Series 500 frame-size loaders replaced the popular S185 and T190 (among many others). This loader size is the most popular in the world and has been for two decades.
- 2014** Bobcat launched the 400 frame-size loaders, completing the M-Series line; manufactured its one-millionth loader; introduced its own Tier 4, non-DPF engines; and opened the Bobcat Acceleration Center, a dedicated innovation, testing and technology facility.
- 2016** Launched the M2-Series loaders.
- 2017** Launched the R-Series excavators.
- 2019** Launch of the compact tractors and backhoe loader.
- 2020** Launch of R-Series loaders and small articulated loaders.
- Today** There are more Bobcat skid-steer loaders at work around the world than all other brands combined.
- Today** Bobcat manufactures more attachments than anyone in the world.
- Today** Bobcat is the only company that offers operator training kits for compact equipment.
- Today** Bobcat offers a full range of extendable-arm options, three sizes fitting five different excavator models.
- Today** Compact track loaders are rapidly becoming the product of choice in many market segments.

BOBCAT TIMELINE





YOU ARE ONE TOUGH ANIMAL.

Everything we put into Bobcat equipment is designed to make more of whatever you bring to the job. Whether it's strength, versatility, speed or agility, it's built around you.

Certain specification(s) are based on engineering calculations and are not actual measurements. Specification(s) are provided for comparison purposes only and are subject to change without notice. Specification(s) for your individual Bobcat equipment will vary based on normal variations in design, manufacturing, operating conditions, and other factors.



Bobcat is a Doosan company. Doosan is a global leader in construction equipment, power and water solutions, engines, and engineering, proudly serving customers and communities for more than a century.

Bobcat®, the Bobcat logo and the colors of the Bobcat machine are registered trademarks of Bobcat Company in the United States and various other countries.

©2021 Bobcat Company. All rights reserved.

Doosan Bobcat Korea Co., Ltd.

www.bobcat.com



Bobcat®

One Tough Animal.

B-1990-EN (04/21)