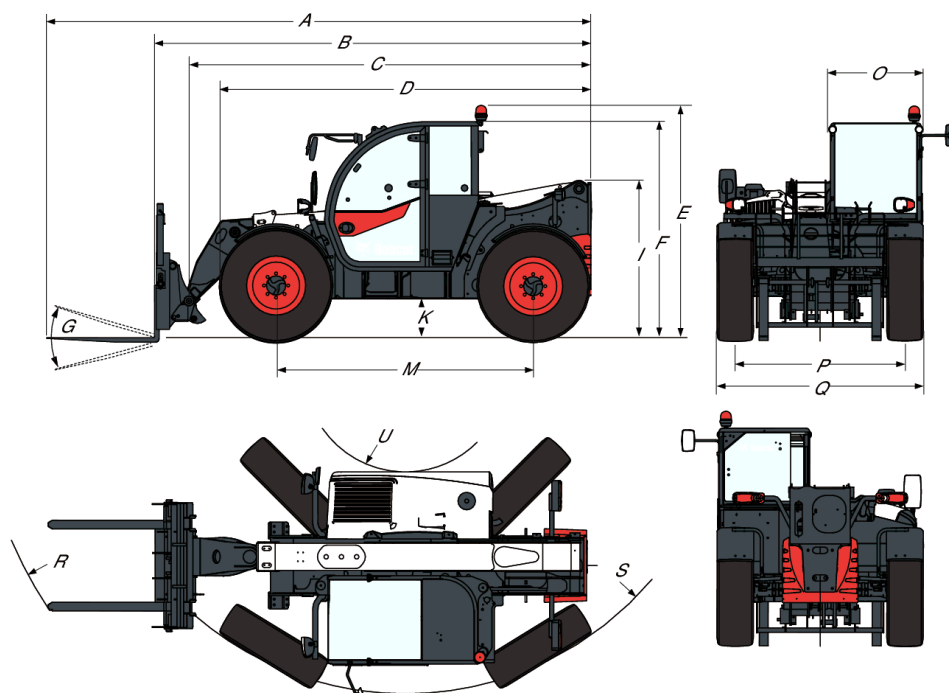


# TL35-70 100 IIIA R-Series Telescopic Handler

## Telescopic Specifications

### Dimensions

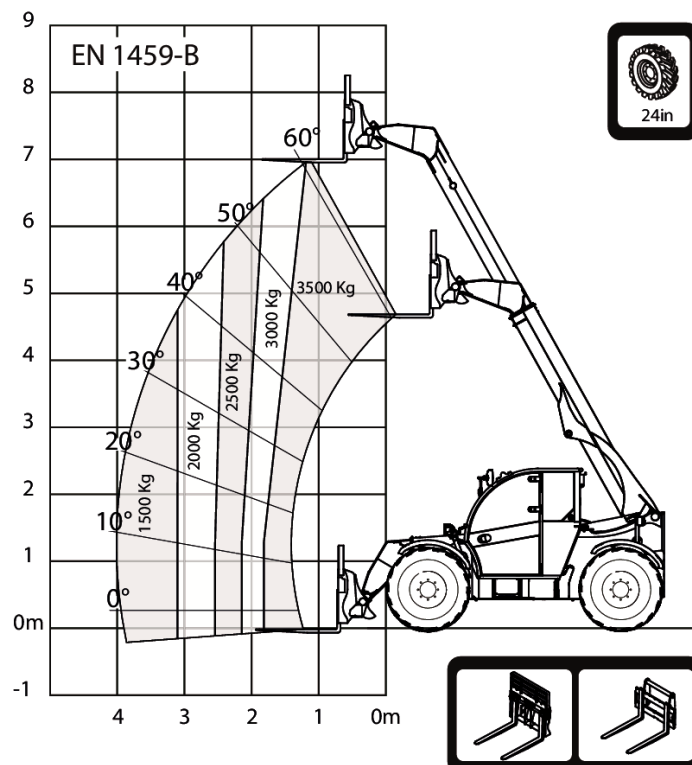
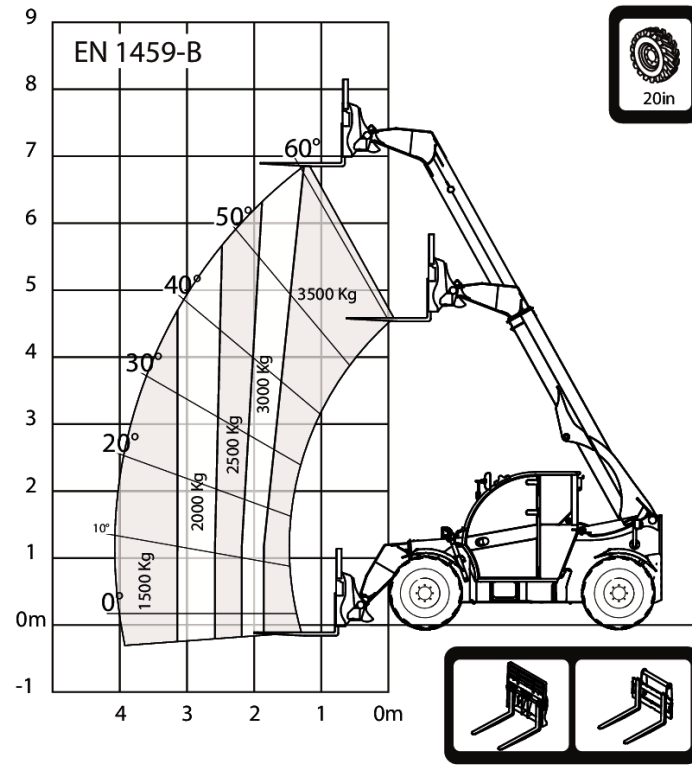


(A) Overall length (to forks tip)	6074.0 mm
(B) Overall length (to forks face)	4869.0 mm
(C) Overall length (to headstock pin)	4763.0 mm
(D) Overall length (to front tyres / Stabilizers (when equipped))	4058.0 mm
(D*) Overall length (to front tyres 24" / Stabilizers (when equipped))	4145.0 mm
(E) Overall height (with rotating beacon)	2503.0 mm
(E*) Overall height with 24" tyres (with rotating beacon)	2587.0 mm
(F) Overall height (with roof wiper)	2373.0 mm
(F*) Overall height with 24" tyres (with roof wiper)	2457.0 mm
(I) Height back of the machine	1668.0 mm
(I*) Height back of the machine with 24" tyres	1752.0 mm
(K) Ground clearance	346.0 mm
(K*) Ground clearance with 24" tyres	430.0 mm
(L) Length - Front axle to forks face	1356.0 mm
(M) Wheelbase	2870.0 mm
(N) Length - Rear axle to machine rear	643.0 mm
(O) Operator cab outside width	1013.0 mm
(P) Track width	1895.0 mm
(Q) Width over standard tyres	2300.0 mm
(S) External turning radius (at tyres)	3714.0 mm
(S*) External turning radius with 24" tyres (at tyres)	3714.0 mm
(U) Internal turning radius (cab)	1092.0 mm
(U*) Internal turning radius with 24" tyres (cab)	1092.0 mm
(R) External turning radius (with forks spaced 1040 mm ext.)	4925.0 mm
(R*) External turning radius with 24" tyres (with forks spaced 1040 mm ext.)	4925.0 mm
(G) Carriage rotation angle	135.0°

# TL35-70 100 IIIA R-Series Telescopic Handler

Telescopic  
Specifications

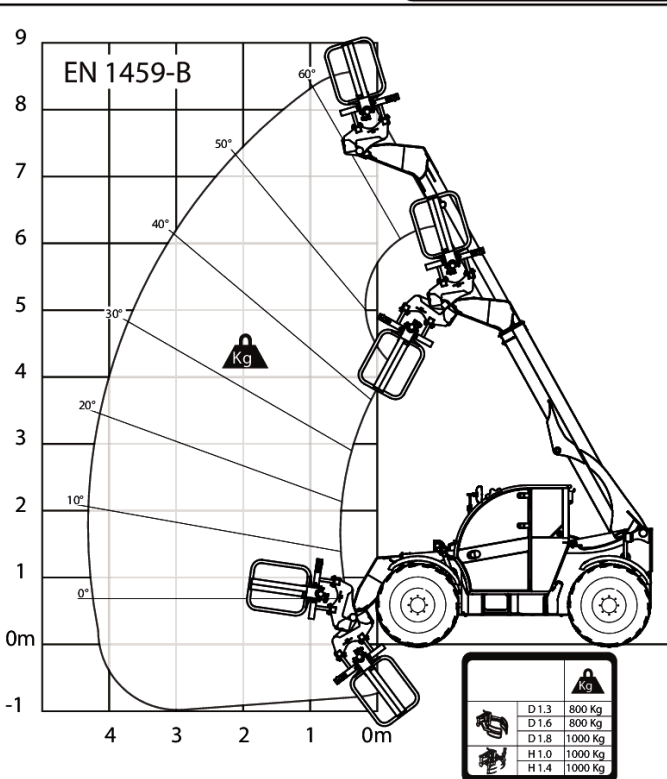
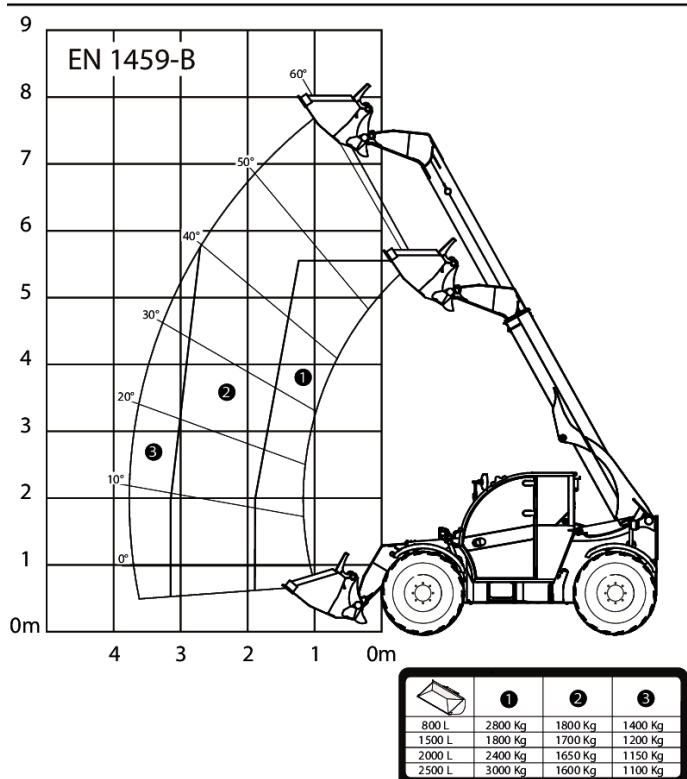
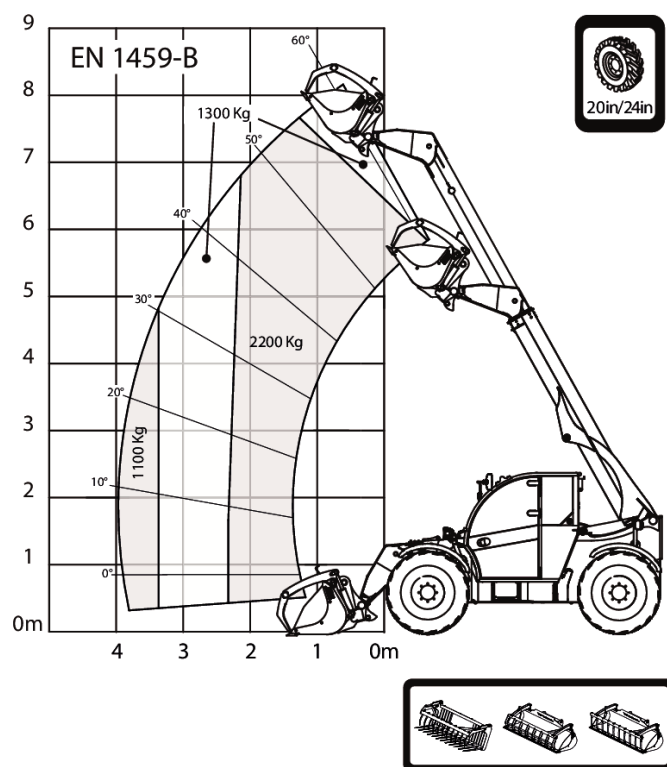
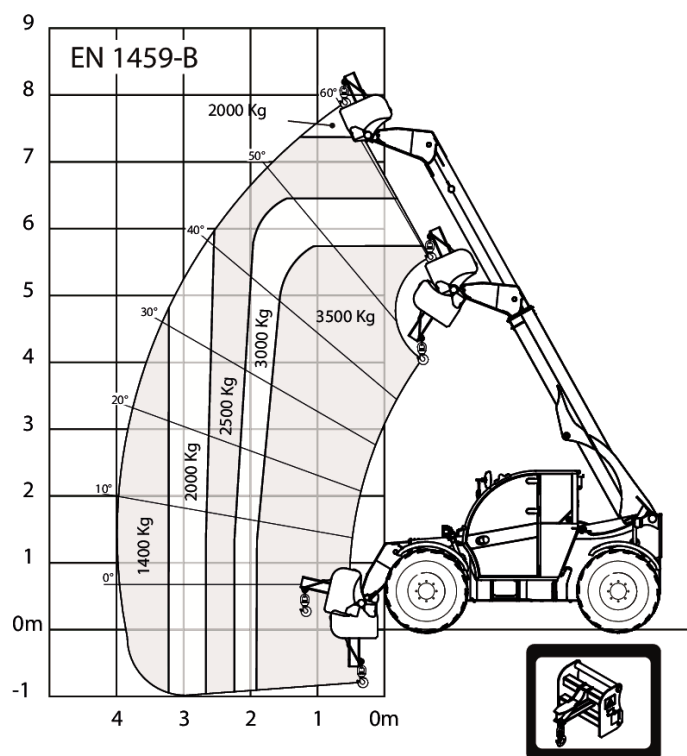
## Load Charts



# TL35-70 100 IIIA R-Series Telescopic Handler

## Telescopic Specifications

### Load Charts



# TL35-70 100 IIIA R-Series Telescopic Handler

## Telescopic Specifications

### Performance

Tilt Breakout force	6200 daN
Drawbar pull (20" tyres)	8000 daN
Drawbar pull (24" tyres)	7000 daN
Max. gradeability (20" tyres)	33.0°
Max. gradeability (24" tyres)	33.0°
Max. gradeability with rated load (20" tyres)	33.0°
Max. gradeability with rated load (24" tyres)	33.0°
Rated capacity	3500 kg
Capacity (at max. height on tyres)	3500 kg
Capacity at max. reach (20" tyres)	1500 kg
Capacity at max. reach (24" tyres)	1500 kg
Lifting height (20" tyres)	6889.0 mm
Lifting height (24" tyres)	6973.0 mm
Max. reach (20" tyres)	4002.0 mm
Max. reach (24" tyres)	3915.0 mm
Reach at max height on tyres (20" tyres)	1036.0 mm
Reach at max height on tyres (24" tyres)	1123.0 mm

### Cycle times

Boom raising	8.0 s
Boom lowering	6.0 s
Boom extension	7.1 s
Boom retraction	6.5 s
Crowding	3.0 s
Dumping	2.7 s

### Weights

Unladen weight (20" tyres)	6880 kg
Unladen operating Weight (20" tyres)	7050 kg
Unlade operating Weight on front axle (20" tyres)	2880 kg
Unladen operating Weight on rear axle (20" tyres)	4170 kg
Unladen weight (24" tyres)	7020 kg
Unladen operating Weight (24" tyres)	7190 kg
Unlade operating Weight on front axle (24" tyres)	2950 kg
Unladen operating Weight on rear axle (24" tyres)	4240 kg
Max ground Pressure on tyres-hard soil	11.0

### Engine

Make / Model	PERKINS / 1104D-44TA
Fuel	DIESEL
Cooling	WATER
Rated power (ISO 14396)	74.0 kW
Rated speed	2200.0 RPM
Maximum torque at 1400 rpm	410.0 Nm
Number of cylinders	4.0
Displacement	4.40 L
Bore	105.0 mm
Stroke	127.0 mm
Lubrication	Gear pump pressure

# TL35-70 100 IIIA R-Series Telescopic Handler

## Telescopic Specifications

Crankshaft Ventilation  
Air filter  
Ignition

Open breathing  
Dry replaceable cartridge with safety element  
Diesel compression

### Electrical

Alternator	90 A
Battery	110.0
Starter	3.2 kW

### Hydraulic System

Pump type	Gear pump with LS valve
Pump capacity	100.00 L/min
Relief valve pressure setting	255.00 bar
Control valve type	Open center with flow sharing & flow compensators technology
Hydraulic filter specs	Full flow filtration
Auxiliary flow front	100.00 L/min
Auxiliary flow rear	100.00 L/min

### Drive system

Transmission	Hydrostatic with electronic regulation
Main Drive	Hydrostatic motor + 2 speed gearbox

### Traction

Standard Tyres	405/70-20 16PR TM R4
Low range - turtle mode (24" / 20")	6 / 5
Low range - rabbit mode (24" / 20")	11 / 10
High range - turtle mode (24" / 20")	16 / 14
High range - rabbit mode (24" / 20")	30 / 26
Low range - turtle mode (24" / 20") - (Option high speed)	6 / 5
Low range - rabbit mode (24" / 20") - (Option high speed)	12 / 10
High range - turtle mode (24" / 20") - (Option high speed)	18 / 16
High range - rabbit mode (24" / 20") - (Option high speed)	40 / 35

### Optional Tyres

MICHELIN 400/80-24 162A8 IND TL POWER CL
400/80-24 / 20PR TM R4
MICHELIN 460/70R24 159A8/159B XMCL IND TL
MICHELIN 500/70R24 164A8/164B IND TL XMCL
NOKIAN 460/65R24 156A8/151D TRI STEEL TL
DUNLOP 405/70R24 168A2 152J MPT SPT9
DUNLOP 405/70R20 168A2 152J MPT SPT9
ALLIANCE 460/70-R24 159A8
-
SOLIDEAL 400/80-24 /20PR TMR4
MICHELIN 460/70R24 159A8/159B IND TL BIBLOAD

# TL35-70 100 IIIA R-Series Telescopic Handler

## Telescopic Specifications

### Brakes

Engine Braking	Hydrostatic
Parking and Emergency brake	Passive brake
Service Brake	Oil immersed discs

### Steering

Steering Pump	Priority valve on equipment pump
Steering Mode	2 wheel steering / 4 wheel steering / Crab-steering

### Fluid Capacities

Axles front/rear	9,1/9,1
Gear box	1.80 L
Cooling system with heater	15.00 L
Engine oil with filter	14.00 L
Fuel tank	138.00 L
Hydraulic tank	59.00 L
Hydraulic system	105.00 L

### Fluid Specifications

Coolant	Ethylen Glycol Mix 50:68
Engine Oil	""-30°C to 35°C : SAE10W30 -15°C to 45°C : SAE15W40 -40°C to 30°C : SAE5W30 -10°C to 20°C : SAE20W20 "
Fuel	Diesel or fuel
Brake Fluid	None. Brakes use hydraulic system pressure
Hydraulic Fluid	MS68
Transmission Oil	ELF SF3 / TOTAL DYNATRANS FR
Grease for hinges and boom gliders	TOTAL MULTIS EP2

### Controls

Engine	Foot accelerator pedal
Starting	Key-type starter switch and shutdown.
Front auxiliary	Variable thumbwheel on joystick
Boom raising / lowering	Joystick electronic
Boom extension /retraction	Variable thumbwheel on joystick
Service brake	Pedal-activated wet multi-disk on front axle
Secondary brake	Passive brake
Parking brake	Passive brake
Steering	Proportional hydraulic steering via a conventional steering wheel
Speed range and Forward/reverse drive	Switch for hydrostatic motor and switch on joystick or lever for FNR
Steering modes	Button and screen for selection
Auxiliary pressure release	Bobcat Coupler
Eco mode	Eco mode switch
SHS mode	SHS mode switch

### Instruments

#### Instruments

## TL35-70 100 IIIA R-Series Telescopic Handler

### Telescopes Specifications

- Gauges
  - Engine RPM
  - Total operating hours
  - Job hours
  - Boom angle
  - Vehicle speed
  - Fuel gauge
  - Engine coolant temperature gauge
- Indicators
  - Front and rear wheel alignment status on screen
  - Headlight full beam
  - Headlight low beam
  - Position lights
  - Left and right turn
  - Trailer turn
  - Parking brake
  - Longitudinal stability level
  - Windscreen wipers
  - Work lights
  - Flashing warning light
  - Hazard warning lights
  - Gear Speed choice
  - Hydraulic function lock
  - Rear fog lights
  - Heater fan
  - Hydraulic fluid over-temperature
  - Engine coolant over-temperature
  - Low oil pressure
  - Battery not charging
  - Longitudinal stability alarm

### Serviceability

---

#### **Serviceability**

- Access through the side engine cover and access panel:
  - Air cleaner
  - Fuel filter
  - Engine oil filter
  - Engine oil dipstick
  - Starter
  - Alternator
- Access within the cab:
  - Glass washer fluid
  - Fuses, diodes and relays
  - ISL control box

### Environmental

---

Operator noise level (LpA) (EN 12053)	76 dB(A)
Whole body vibration (EN 13059)	1.50 ms <sup>-2</sup>